

~~KNIGHT AND ARCHERS:~~ ASSEMBLY INSTRUCTIONS

Knight Instruction

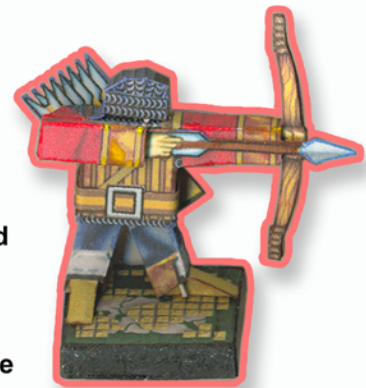
Pre-assembly: If the helmet is not to be use, Cut out the printed torso piece.

1. Score and cut out all needed parts.
2. Glue both side of the front and side torso. After a short time to allow drying, assemble the torso portion and set aside.
3. Assemble the leg/base portion of the figure. First match up the outside and inside portions of the left and right leg (you may fold then cut or cut out the inner leg and paste) and glue.
4. Fold the leg 90 degree from the flat layout position so the legs are standing upright.
5. Attach the leg/base portion to the completed torso piece.
6. Glue the left and right leg guards to the legs.
7. Fit the chest piece/tabard over the head portion of the torso piece and glue. Wrap the belt around the to the back of the chest piece and glue. YOu may trim the belt as needed.
8. Attach the right (sword) arm and the left sword arm and glue to the torso.
9. Glue the shield to the left arm.
10. Slightly bend the shoulder flaps down.
11. **Optional.** Attach the helmet to the torso. See the helmet assembly instruction for a more detail assembly.
12. Glue the Knight to the base.



Archer Instruction

1. Score and cut out all needed parts. For scoring instruction for the chest piece, see the archer chest piece assembly instruction.
2. Assemble the internal element. Slide in the torso, shoulder, left and right leg pieces to the main internal element/structure.
3. Glue the left and right textured bow to the bow part of the internal element/structure.
4. **This part is optional.** In order, glue the right legging first. Next, Glue the left legging to the left leg.
5. For the chest piece, see the detail chest piece instruction.
6. Glue the right sleeve to the chest. Slide into the right sleeve the hand and arrow and glue.
Note: If the arrow cut is too precise you may cut that portion out.
7. Attach the helmet to the head portion. See the helmet assembly instruction for a more detail assembly.
8. Glue the quiver to the back of the archer.
9. Glue the figure to the base.



Base

Glue the base cover over a 5mm thick foamcore piece with the size of 1 inch x 1 inch. For a simpler base, just cut the middle portion leaving out the side cover and glue to a 110 # card-stock or equivalent.

HEAD ASSEMBLY INSTRUCTION

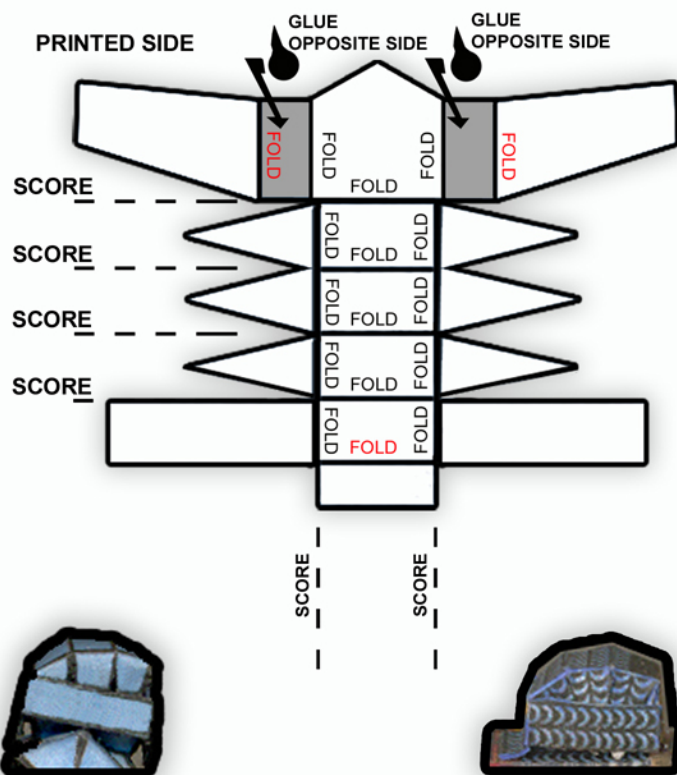


DIAGRAM 1

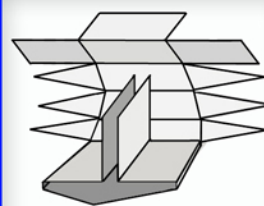


DIAGRAM 2

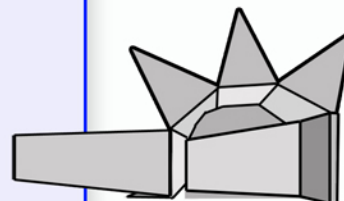


DIAGRAM 3

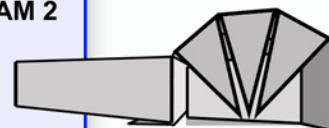
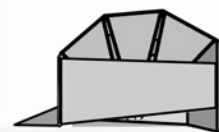
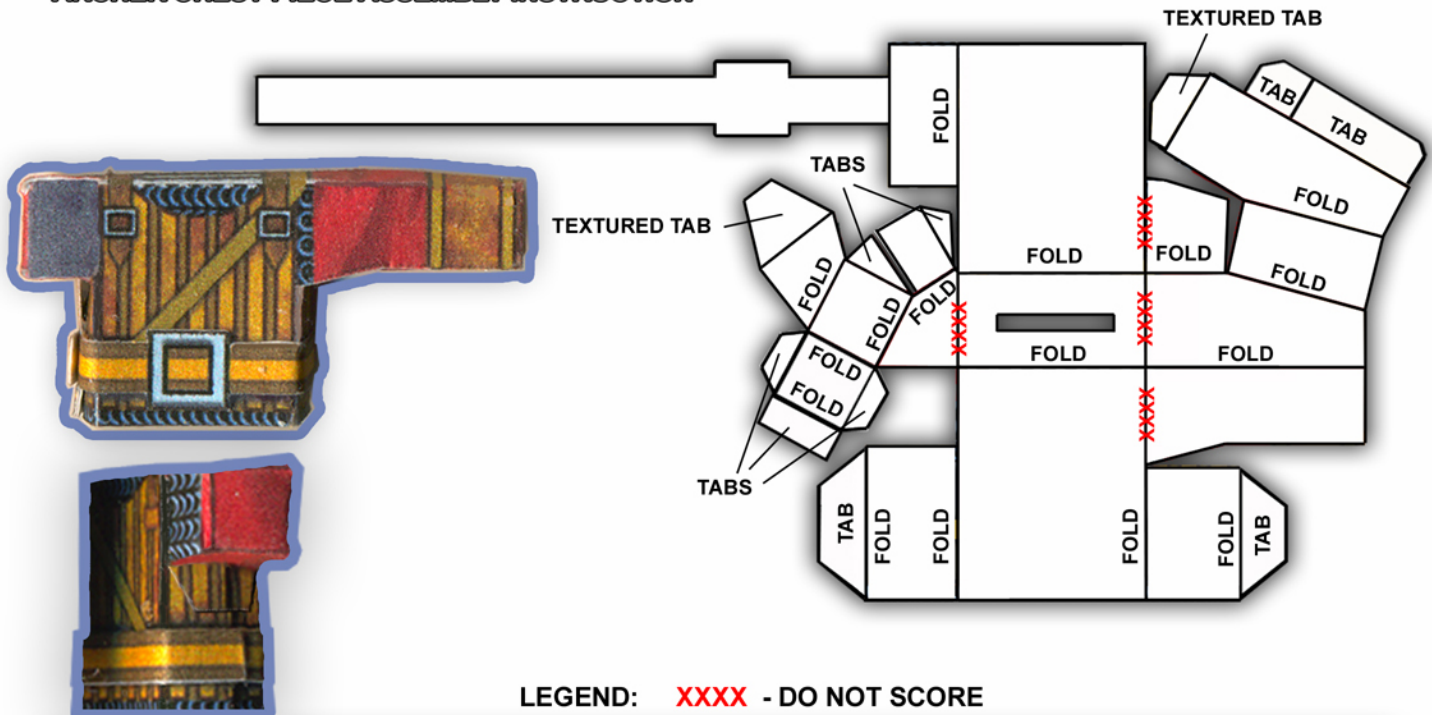


DIAGRAM 4

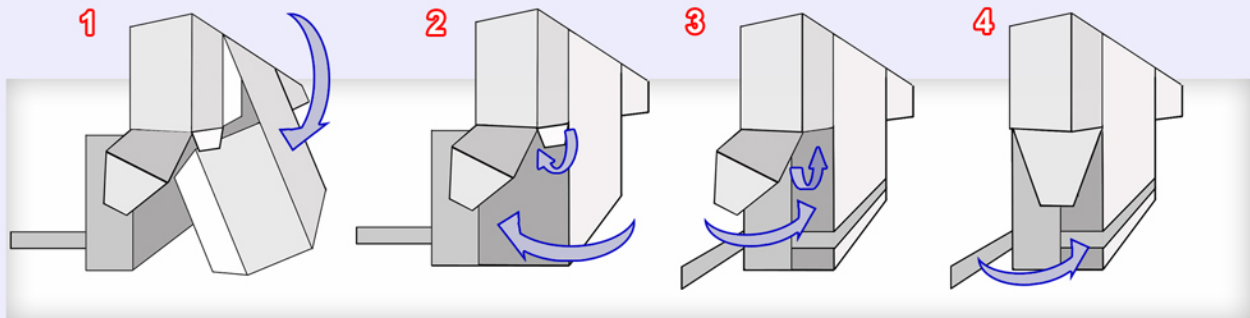


1. Cut out helmet, lightly score and fold where indicated (score where fold is required).
2. Pre fold as shown in diagram 1.
3. From the diagram above, apply glue and fold. **Do not glue the inner side tab at this time.**
4. Place over the model's head as shown from diagram 2 to 4 and trim any excess inner side tab and the outer side as needed.
5. Glue the inner side tab and allow a few minutes to harden.
6. Fold over head and glue the last portion to the body.
7. Fold down the side of the hood but do not glue.
8. Fold over the outer side and glue.

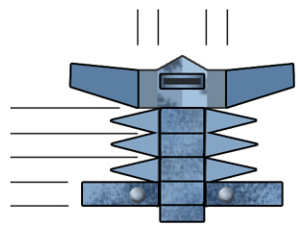
ARCHER CHEST PIECE ASSEMBLY INSTRUCTION



FOLDING DIAGRAM - RIGHT SIDE VIEW

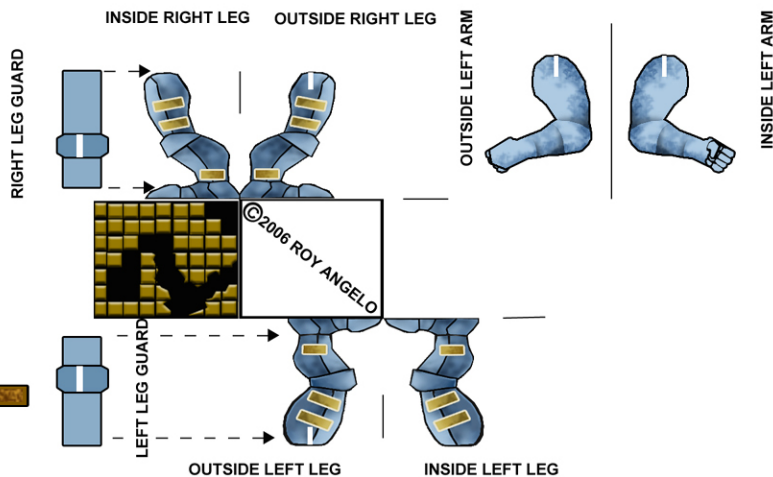
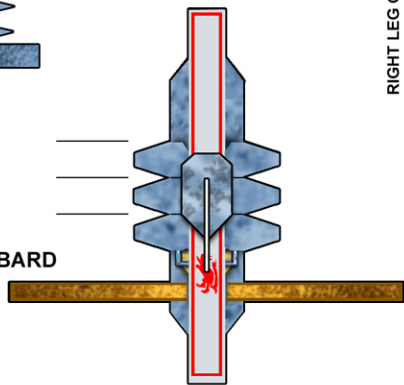


1. Score where fold is indicated, then cut the chest piece out.
2. Pre-fold and place the chest piece over the head slot. The head part of the internal element should be sticking through. Glue the upper portion of the chest piece to the internal support.
3. Fold the left side and tuck the tabs inside so they do not show except for the textured tabs which is glued on the outside.
4. For the right side from the diagram above, the white front tab is tuck inside the chest piece and then glue. **Do not glue the underside yet.**
5. The black rear tab is tuck inside the back chest piece and then glued.
6. Fold the front side portion first and glue the tab to the back inside of the chest piece, then the rear side portion is folded and glued. Wrap the belt around the chest piece. Trim the belt as needed.
7. Fold the underside and glue the textured side tab to the side.



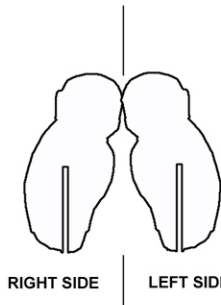
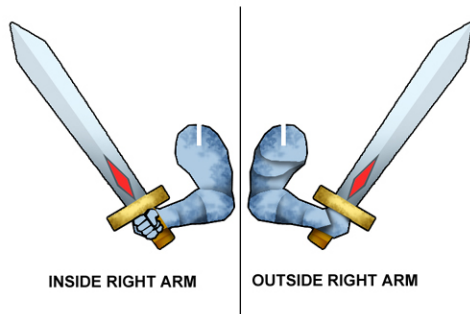
HELMET

CHEST PIECE AND TABARD

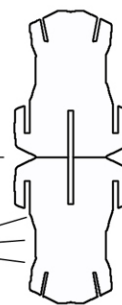


LEG ASSEMBLY

PRINT ON 11# CARDSTOCK OR THE EQUIVALENT



NO GLUE AREA
SAME FOR THE
OPPOSITE SIDE



BACK

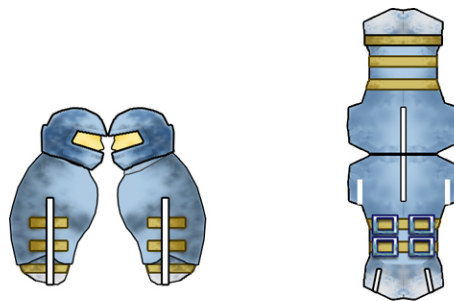
SHIELD FRONT

TORSO ASSEMBLY

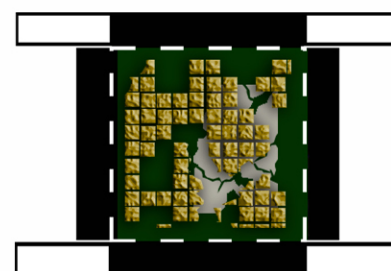
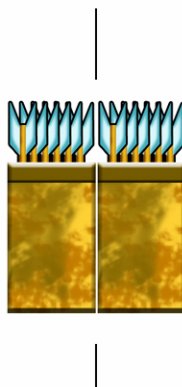
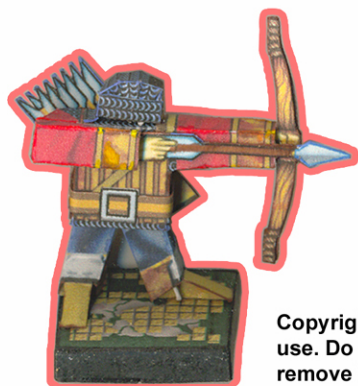
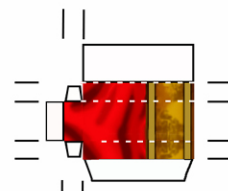
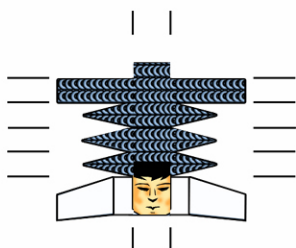
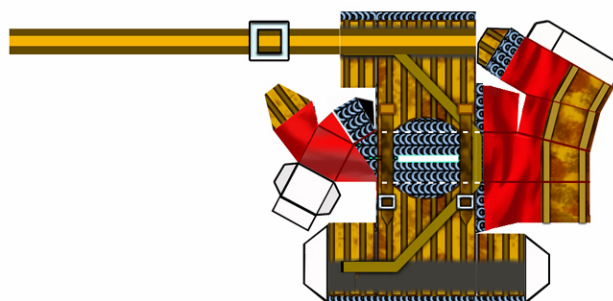
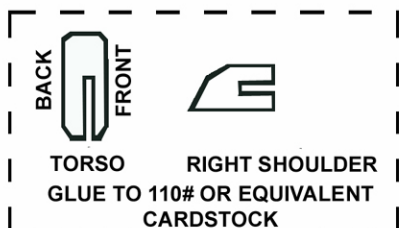
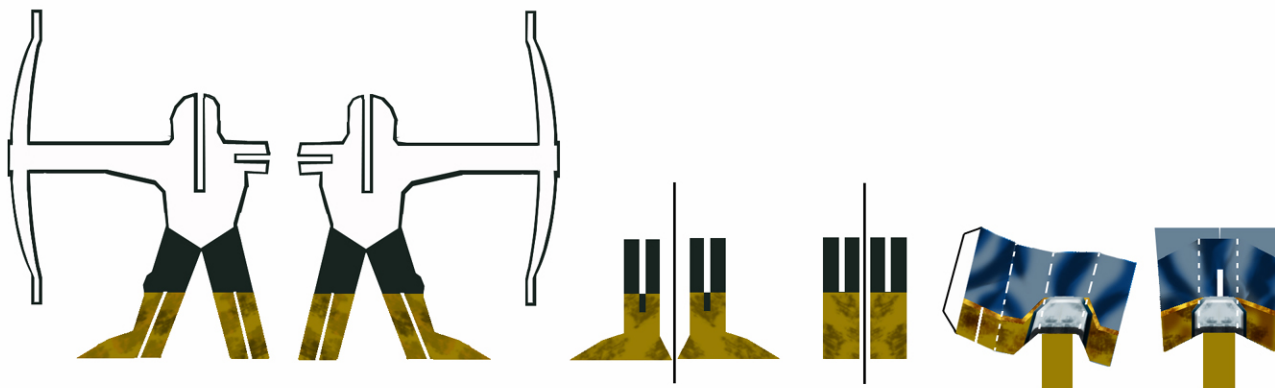
NOTE: USE THIS PARTS IF THE HELMET AND CHEST PIECE ARE TO COVER THE ENTIRE BODY. IF PARTS OF THE BODY IS TO BE EXPOSE USE THE FULL COLOR VERSION PROVIDED

WARNING: DO NOT APPLY GLUE TO THE SIDE OF THE FRONT POSTURE TORSO PART IF YOU INTEND TO USE THE CHEST PIECE AND TABARD. THE BELT GOES THROUGH (BETWEEN) THE ARM AND TORSO PARTS

LEGEND: ——— LIGHTY SCORE AND FOLD



Copyright © 2006 Roy Angelo all rights reserved. This is a free download for personal use. Do not sell or include this model with items for sale without permission. Do not remove this notice. For more free paper model go to www.paperworlds.com



Copyright © 2006 Roy Angelo all rights reserved. This is a free download for personal use. Do not sell or include this model with items for sale without permission. Do not remove this notice. For more free paper model go to www.paperworlds.com